

READ QR CODE THAT CONTAIN JAPANESE CHARACTER(KANJI) IN SAMPLE OPOS APPLICATION

Step to decode QR code that contain Japanese character(Kanji) in sample OPOS application

ISSUE / QUESTION

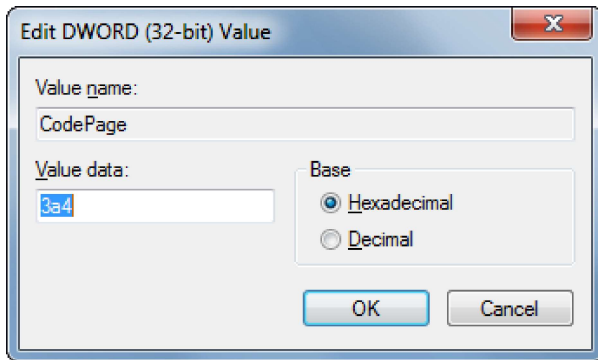
How to decode QR code that contain Japanese character(Kanji) in sample OPOS application?

APPLICABLE TO

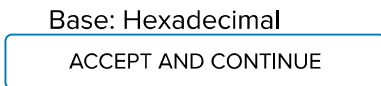
OPOS sample application

RESOLUTION / ANSWER

1. Update Zebra sample application, SDK to version 3.03.0011.
2. To start the registry editor, click on Start > Run > regedit32.
3. In the registry path, Computer\HKEY_LOCAL_MACHINE\SOFTWARE\Zebra\Zebra\Scanners\OPOS\Scanner, double click on "CodePage", update the Value data to "3a4" and click OK.



4. If "CodePage" DWORD not found at the above registry path, please create a new DWORD(32-bit) value. Right click that empty space, click and select "New", click on "DWORD(32-bit) Value" and fill the details as below, click OK. Value name: "CodePage" Value data: "3a4" Base: Hexadecimal



5. Restart your Zebra scanner OPOS sample application.

Site Feedback



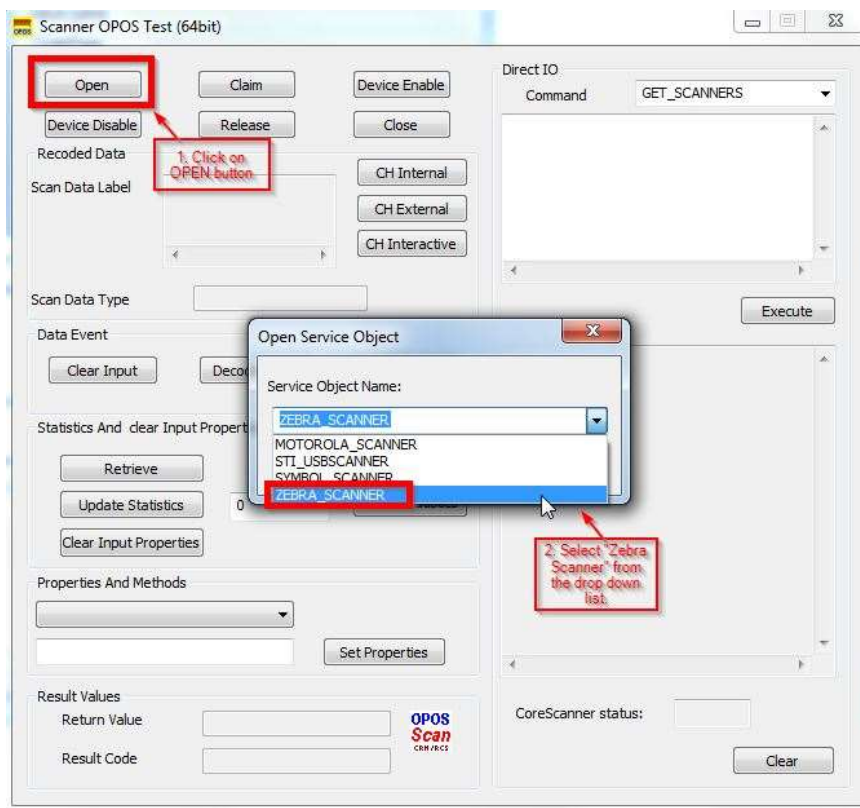
How to decode the barcode in OPOS sample application:

1. Connect the scanner to host via USB cable, scan on USB OPOS interface setting barcode as below.



**OPOS
(IBM Hand-Held with Full Disable)**

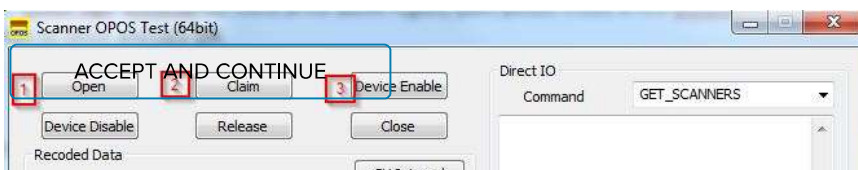
2. Open and run Zebra Scanner OPOS Sample application(x64).
3. Click on OPEN button, select "Zebra scanner" from the Service Object Name drop down list as below.

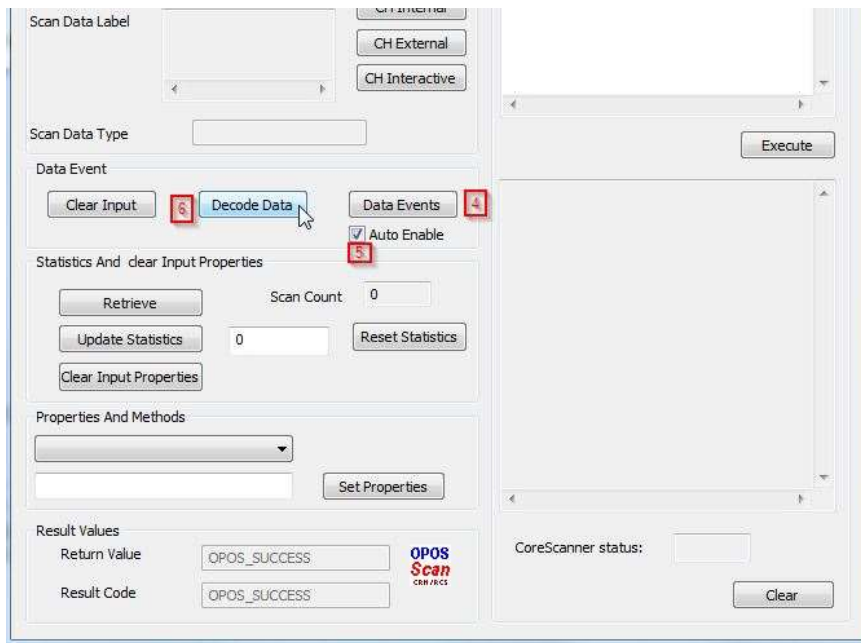


4. Click on "Claim" button, "Device Enable" button, and "Data Events" button. Tick on "Auto Enable" checkbox, and click "Decode Data" button.

Site Feedback

This site uses cookies to provide an improved digital experience. You can learn more about the cookies we use as well as how you can change your cookie settings by clicking [here \(https://www.zebra.com/us/en/about-zebra/company-information/privacy-statement.html\)](https://www.zebra.com/us/en/about-zebra/company-information/privacy-statement.html). By continuing to use this site without changing your settings, you are agreeing to our use of cookies. For more information, please refer to our [Privacy Statement to learn more \(https://www.zebra.com/us/en/about-zebra/company-information/legal/privacy-statement.html\)](https://www.zebra.com/us/en/about-zebra/company-information/legal/privacy-statement.html).





5. Scan the QR code that contain Korean character, the data should display at scan data label column.

Was this article helpful?



RELATED ARTICLES

- Set Enterprise Home Screen (EHS) as Default Launcher using StageNow Tool (/s/article/Set-Enterprise-Home-Screen-EHS-as-Default-Launcher-using-StageNow-Tool) 3.02K
- Windows 10 Bluetooth Setup with Zebra Printers (/s/article/Windows-10-Bluetooth-Setup-with-Zebra-Printers) 2.39K
- Downloading and Using Fonts on Zebra ZPL Printers (/s/article/Downloading-and-Using-Fonts-on-Zebra-ZPL-Printers) 12.11K
- ZT400 'Media Out' Error (/s/article/ZT400-Media-Out-Error) 7.7K
- Update Scanner Firmware (/s/article/Update-Scanner-Firmware) 2.3K

Site Feedback

Didn't find exactly what you're looking for?

This site uses cookies to provide an improved digital experience. You can learn more about the cookies we use as well as how you can change your cookie settings by clicking [here](https://www.zebra.com/us/en/about-zebra/company-information/privacy-statement.html) (https://www.zebra.com/us/en/about-zebra/company-information/privacy-statement.html). By continuing to use this site without changing your settings, you are agreeing to our use of cookies (https://www.zebra.com/us/en/about-zebra/company-information/privacy-statement.html). Privacy Statement to learn more (https://www.zebra.com/us/en/about-zebra/company-information/legal/privacy-statement.html).

ACCEPT AND CONTINUE

[Copyright \(https://www.zebra.com/us/en/about-zebra/company-information/compliance/copyright.html\)](https://www.zebra.com/us/en/about-zebra/company-information/compliance/copyright.html) | [Terms & Conditions \(https://www.zebra.com/us/en/about-zebra/company-information/compliance/information-privacy/terms-of-use.html\)](https://www.zebra.com/us/en/about-zebra/company-information/compliance/information-privacy/terms-of-use.html) | [Privacy Policy \(https://www.zebra.com/us/en/about-zebra/company-information/compliance/information-privacy/privacy-statement.html\)](https://www.zebra.com/us/en/about-zebra/company-information/compliance/information-privacy/privacy-statement.html) | [Site Help \(/s/article/Zebra-Support-Community-Site-Guide\)](https://supportcommunity.zebra.com/s/article/Zebra-Support-Community-Site-Guide)

ZEBRA and the stylized Zebra head are trademarks of Zebra Technologies Corp., registered in many jurisdictions worldwide. All other trademarks are the property of their respective owners. ©2020 Zebra Technologies Corp. and/or its affiliates.

Site Feedback

This site uses cookies to provide an improved digital experience. You can learn more about the cookies we use as well as how you can change your cookie settings by clicking [here \(https://www.zebra.com/us/en/about-zebra/company-information/legal/privacy-statement.html\)](https://www.zebra.com/us/en/about-zebra/company-information/legal/privacy-statement.html). By continuing to use this site without changing your settings, you are agreeing to our use of cookies in accordance with our [Privacy Statement to learn more \(https://www.zebra.com/us/en/about-zebra/company-information/legal/privacy-statement.html\)](https://www.zebra.com/us/en/about-zebra/company-information/legal/privacy-statement.html).



ACCEPT AND CONTINUE